

Exhibit 142  
 Inquest touching the death of  
*Sydney Hobart*  
 State Coroner's Court 44-46  
 Parramatta Road Glebe  
 Date 13.3.00  
 Court Officer

DEPTHS IN METRES

SEE RELATED AUSTRALIAN & ADMIRALTY PUBLICATIONS: Notices to Mariners (for chart part information), List of Lights, List of Radio Signals (navigational, warning and weather), Tide Tables, The Mariner's Handbook, BA5011 & INT 1 (IHO) Booklets (symbols and abbreviations)

144° 145° 146° 147° 148° 149° 150° 151° 152° 153° 154°



CHART SERIES

SOUTH PACIFIC OCEAN

TASMAN SEA  
 NEW ZEALAND TO SE AUSTRALIA

1:3 500 000 (22° 30')

Mercator projection

Produced under the Superintendence of the Hydrographer, Royal New Zealand Navy.  
 From New Zealand, Australian, Admiralty and Ocean Sounding Charts to 1971.  
 Magnetic Variation Curves are for 1990

The easterly variation and annual increase (denoted by a bracketed suffix thus: 14°E) is shown at certain positions on the curve.  
 CAUTION-NAVIGATIONAL AIDS: Only the principal lights and radio navigational aids, indicated by symbols and names are shown on this chart.  
 DOUBTFUL DATA: Reported but unconfirmed depths or dangers are indicated by an encircling dotted line.  
 CABLES: Only transoceanic cables are shown on this chart.

OIL AND GAS FIELDS

Production platforms and associated structures generally exhibit all or some of the following lights:  
 Mo(U)W 15s10 or 15M, Mo(U)R 15s.2M, aircraft obstruction lights, and sound fog signals: Mo(U)30s.  
 Unauthorised navigation is prohibited within 500 metres of all such structures.

AUSTRALIAN FISHING ZONE

The outer limit of the Australian Fishing Zone is subject to adjustment as necessary to comply with the terms of fisheries delimitation agreements arrived at between Australia and neighbouring countries.

A: +40-50%  
 B: +20% e decreasing  
 C: +40% e decreasing

TRES

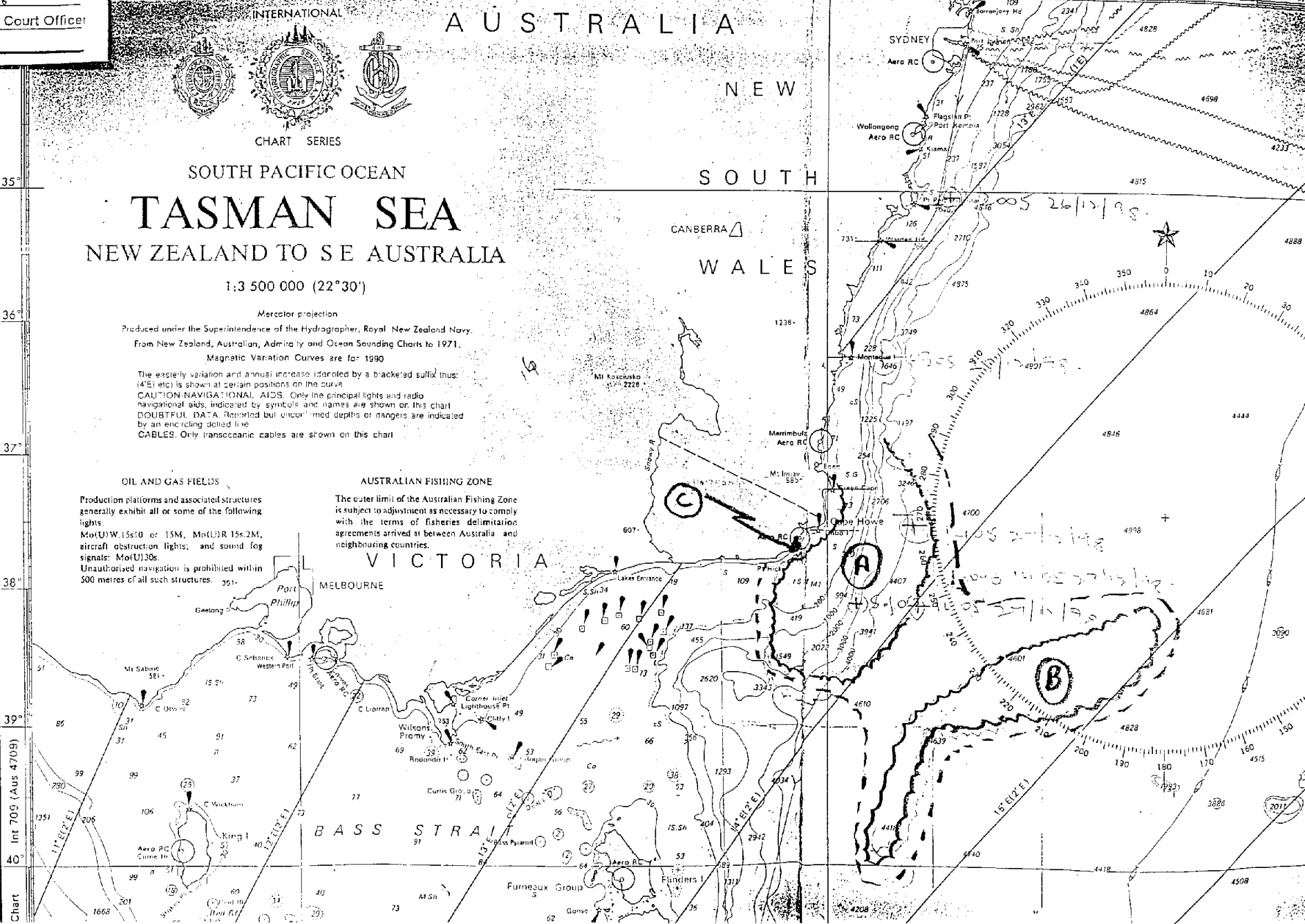
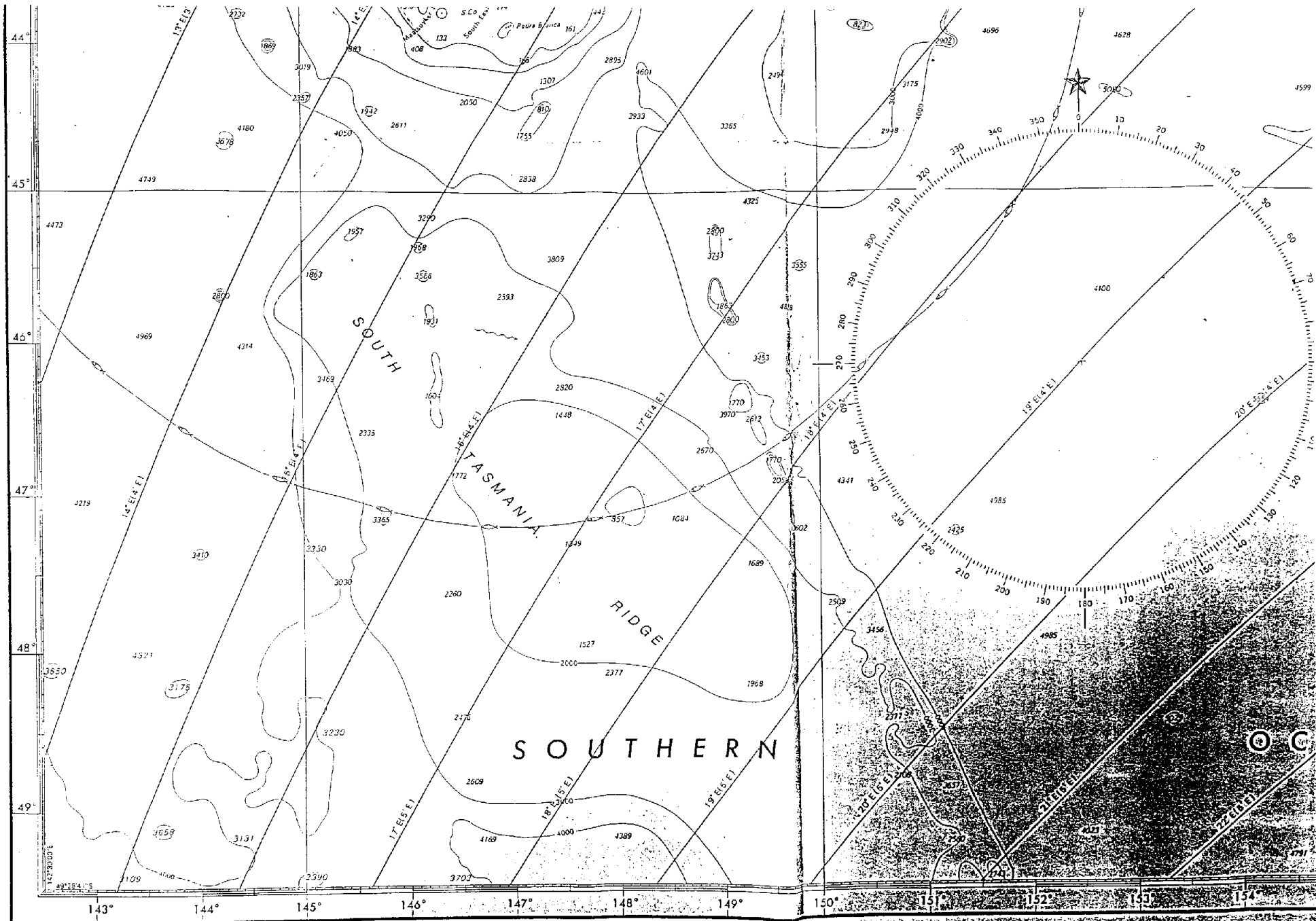


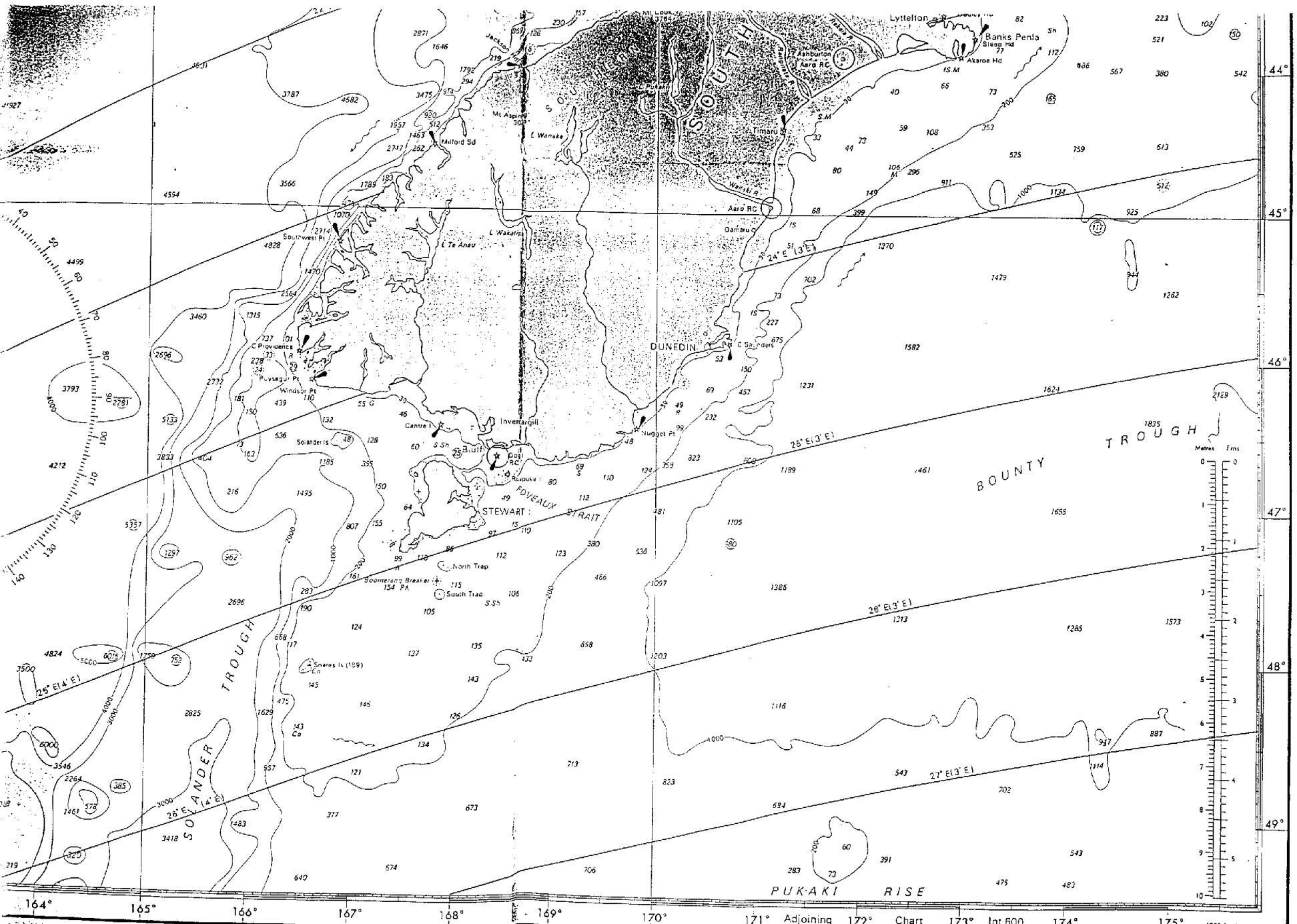
Chart Int 709 (Aus 4709)

4



Notices to Mariners inclusive to 1994-216-22-41-4000

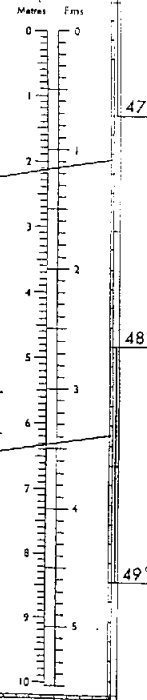




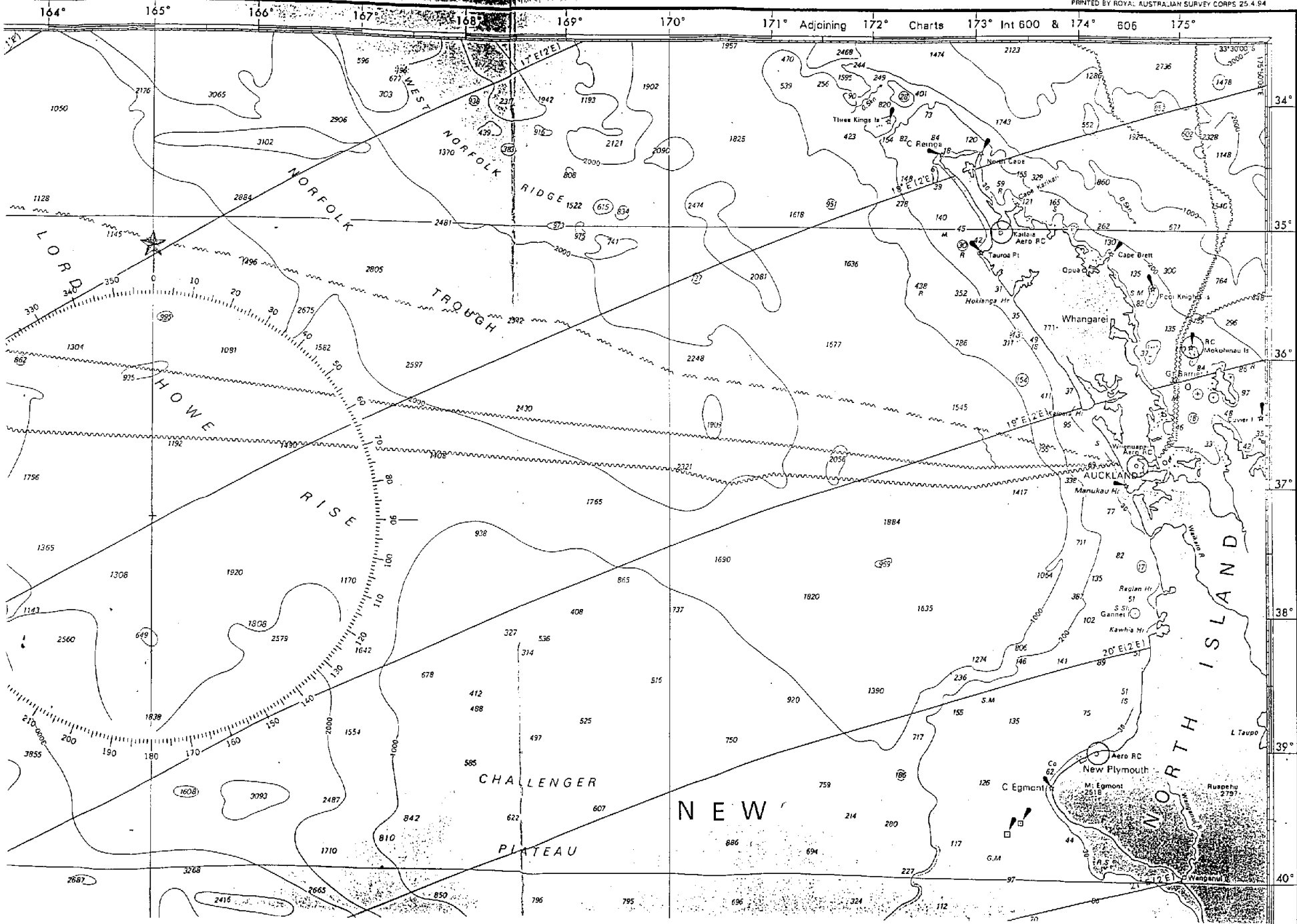
New Edition 21 May 1982  
4 Oct 1991

DEPTHS IN METRES

INT 601  
Aus 4601



164° 165° 166° 167° 168° 169° 170° 171° Adjoining 172° Chart 173° Int 600 174° 175°



DEF

PUBLICATIONS Notices to Mariners (recent, imminent and temporary changes), Sailing Directions (local conditions, directions, regulations),  
to Signal (Inavigational warning and weather transmissions, pilot and port operations services, traffic management, radiobeacons),  
& INT 1 (IHO) Booklets (symbols and abbreviations), etc. ENSURE THAT CHARTS AND PUBLICATIONS ARE KEPT CORRECTED.

